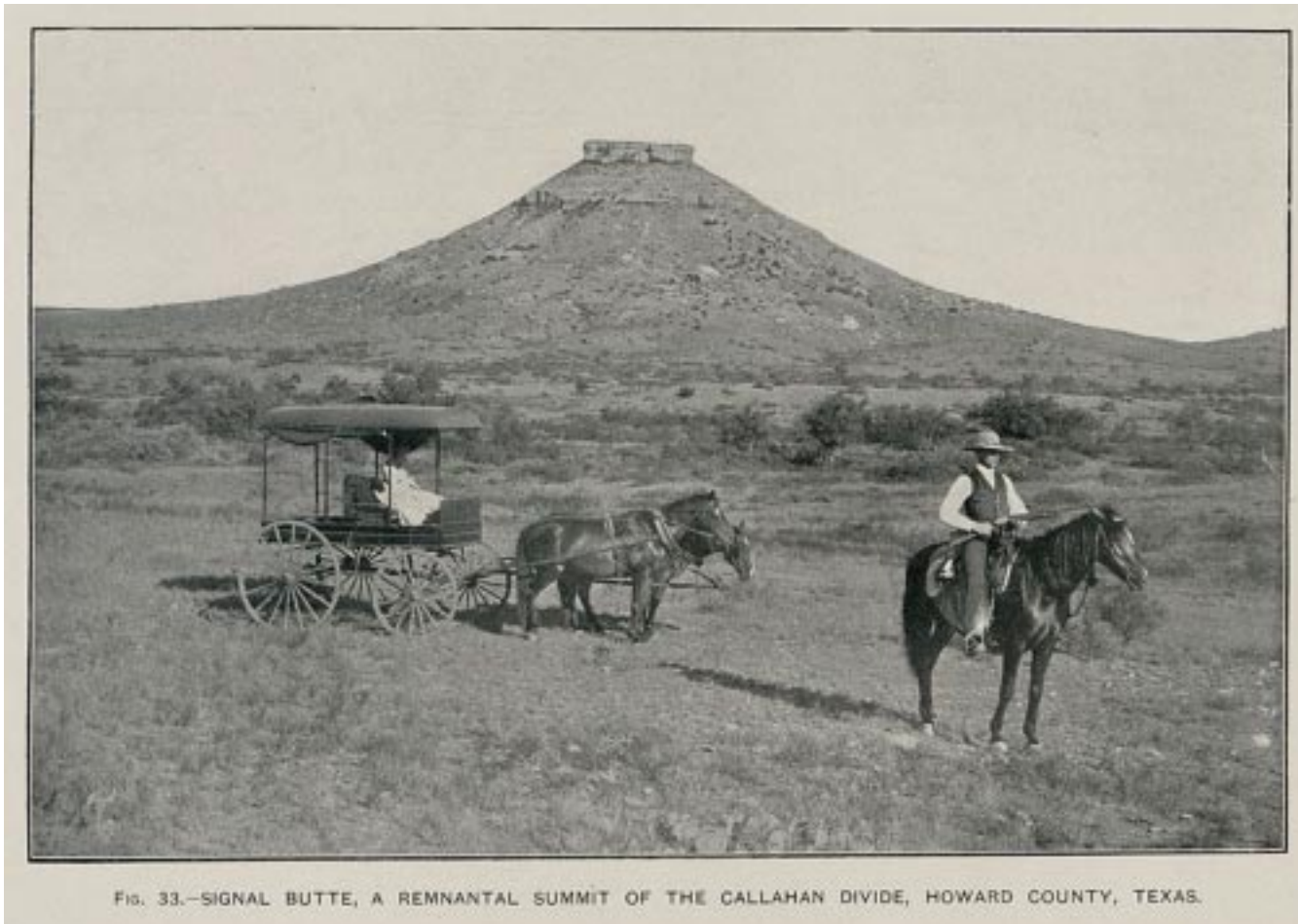


**Signal Mountain Pictured** *Doyle Phillips*



*This is probably the earliest picture I've seen of Signal Mountain. Man on the horse is Arthur Roberts, son of W.T. (Bud) Roberts who was the earliest known resident and rancher in Howard County.*

**Signal Mountain Pictured** *Doyle Phillips*



1907      *In the dead center of the picture there appears to be a structure but I've been to the vicinity many times and never noticed signs of a building.*

**Signal Mountain Pictured** *Doyle Phillips*



*Almost certainly this is the same picture as on the previous page. No building shows but the artist may have colorized it to blend with the background.*

**Signal Mountain Pictured** *Doyle Phillips*



*The previous 2 pages and this seem to be shot from the same location, possibly on the same day. This side of the mountain faces the John Roberts ranch so the lady may be Dora Roberts.*

**Signal Mountain Pictured** *Doyle Phillips*



*Shot from Moss Creek Road on a hot day in 1996. Note the buzzard riding thermals.*

**Signal Mountain Pictured** *Doyle Phillips*



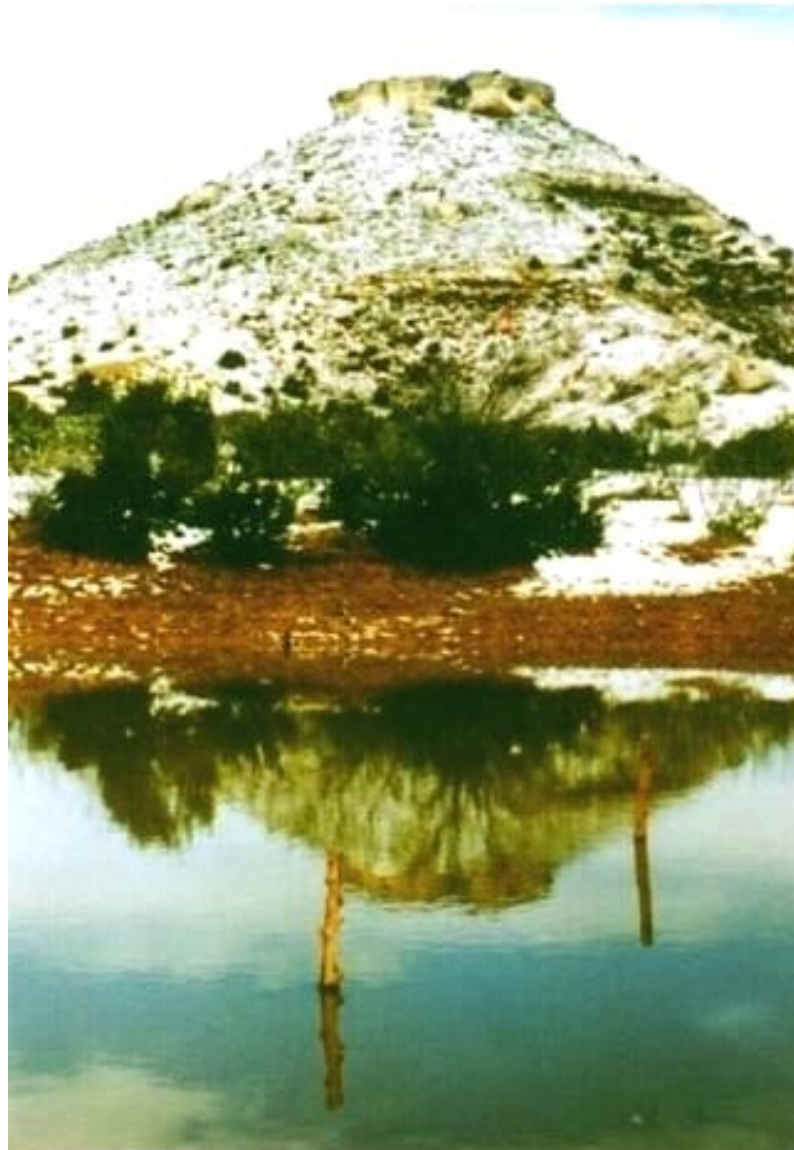
*Shot from the rim of Roberts Mesa. Height is same as the top of the Signal caprock.  
Behind me are metal remnants of a plane that crashed on Roberts during WWII.*

**Signal Mountain Pictured** *Doyle Phillips*



*Stock tank, usually dry.*

**Signal Mountain Pictured** *Doyle Phillips*



*Another stock tank. An Easter day in, I believe, 1999.*



**Signal Mountain Pictured** *Doyle Phillips*



*Probably Easter, 1999*

**Signal Mountain Pictured** *Doyle Phillips*

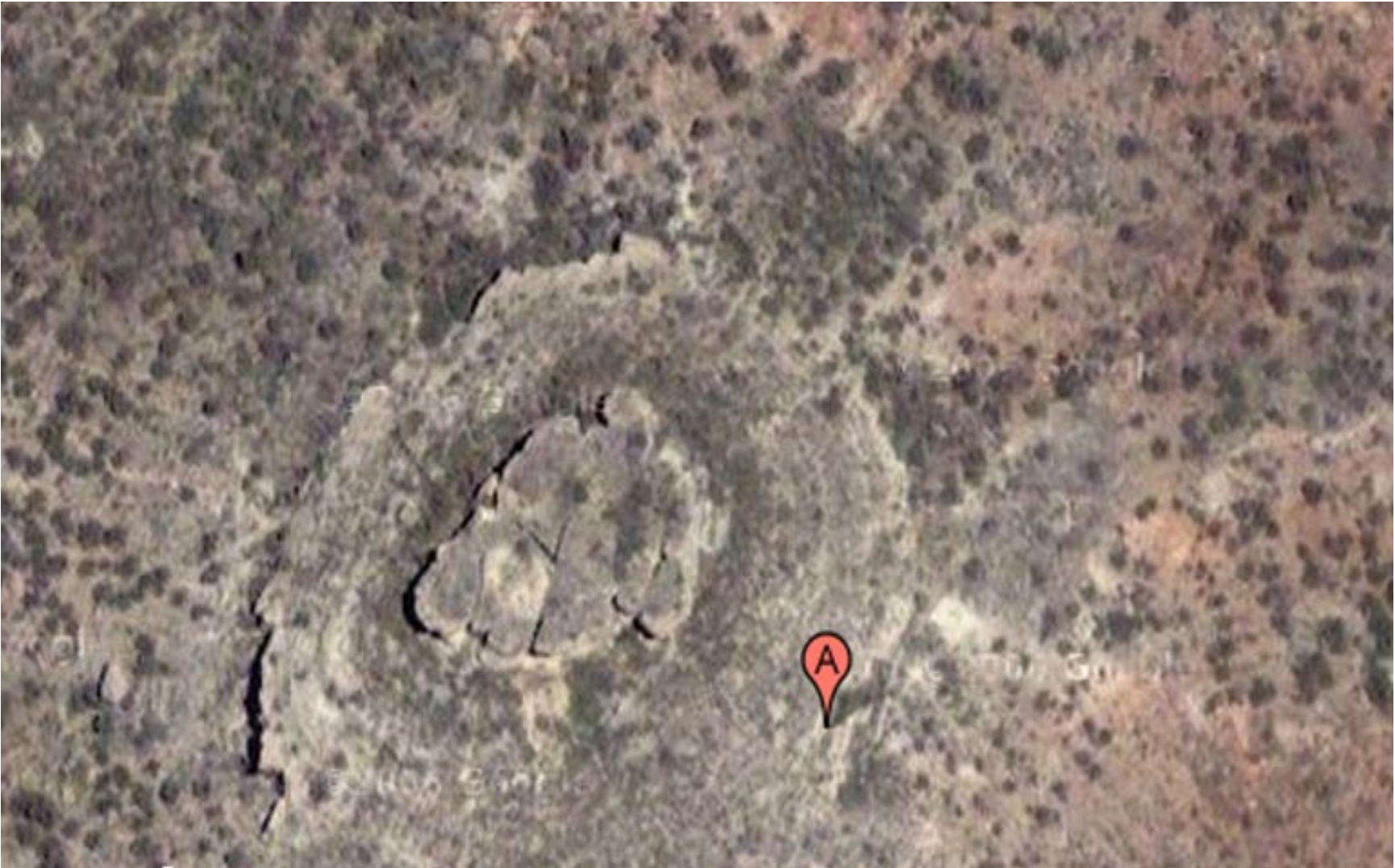


**Signal Mountain Pictured** *Doyle Phillips*



*First two views are from “inside” the Signal Mountain caprock.  
The third is from the top of the caprock looking across at the Roberts Mesa at same height.*

**Signal Mountain Pictured** *Doyle Phillips*



*Satellite view looking down on the caprock of Signal Mountain.*

**Signal Mountain Pictured** *Doyle Phillips*



*Around Signal's rough caprock are all sorts of bird and animal dwellings and scrub oak.  
At the right side of the second picture are mountain goats. Mrs. Dorothy Garrett said  
that the goats trek from old Mexico, according to old timers.*