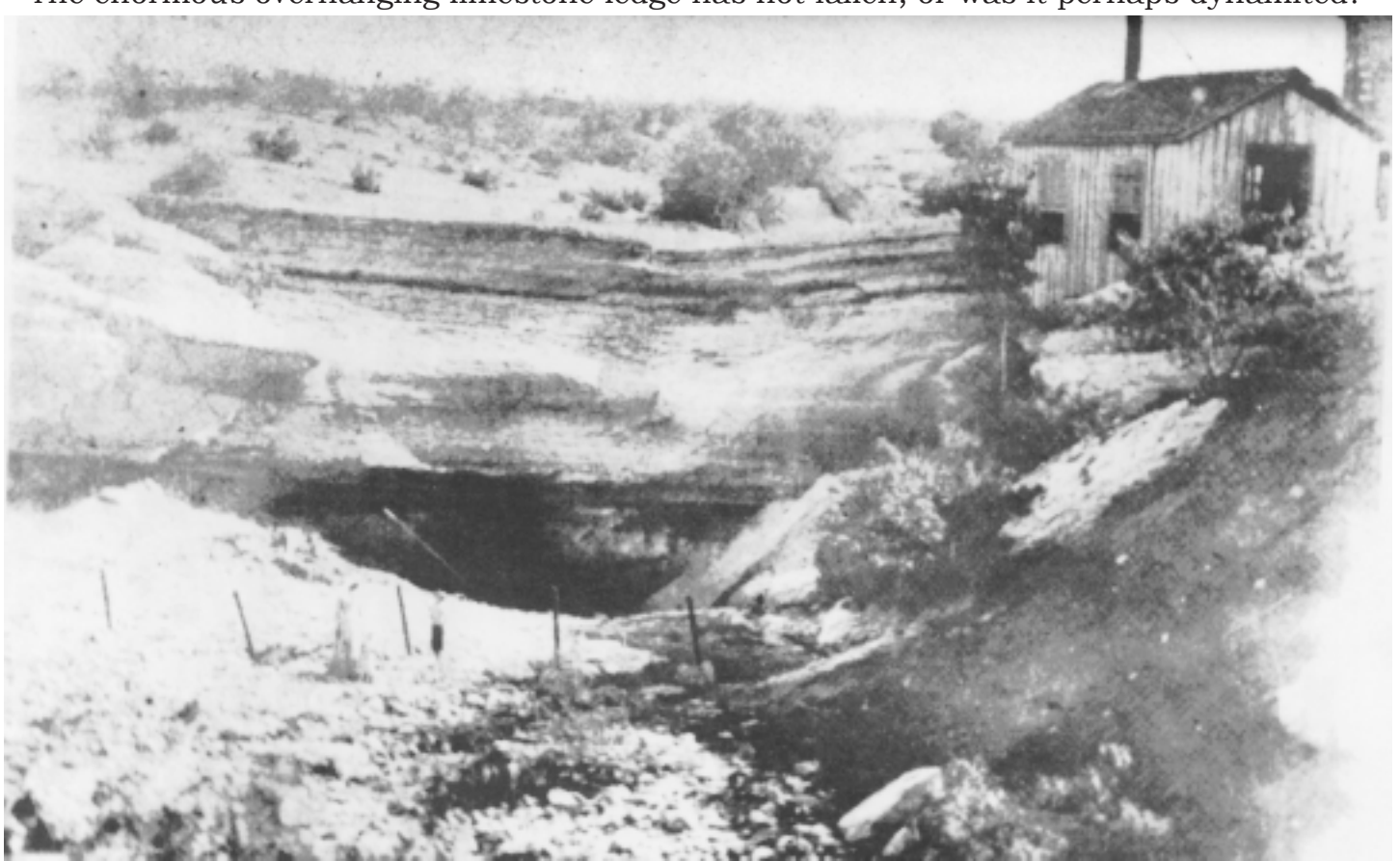


Possibly the earliest photograph of the big spring. The girl and boy are probably the children of W.A. Reagan, the T & P pumphouse operator.

The enormous overhanging limestone ledge has not fallen, or was it perhaps dynamited?



1907 or 1917 View of the Big Spring possibly photographed by Bascom A. Reagan. The house at upper right is probably the house where Bascom was born, 1886.

The ledge has been taken down--for whatever reason.



1917 View of the Big Spring by Bascom A. Reagan.



The lake or reservoir created by the Big Spring has had several names. Views below are from the San Angelo highway. Floods would often stop traffic on the highway.



HUGHES LAKE FLOOD



The railroad's need for water and the wells drilled near the big spring reduced the flow to a trickle and then to nada.

**Big Spring Water Works, Established c. 1896**

